

INDUSTRIAL IOT TRAINING SET 1000

The Industrial IoT training equipment designed using standard industrial parts. Comprehensive vocational training and educational products based on experience and skill. Toward Industrial 4.0 the demand for high quality, greater efficiency and automated machines has increase in the industrial sector of manufacturing plants. Manufacturing plants require continuous monitoring equipment performance, availability and quality. Hence, SCADA and IoT is a vital tool in this process monitoring

Motor Condition Monitoring Trainer 1001

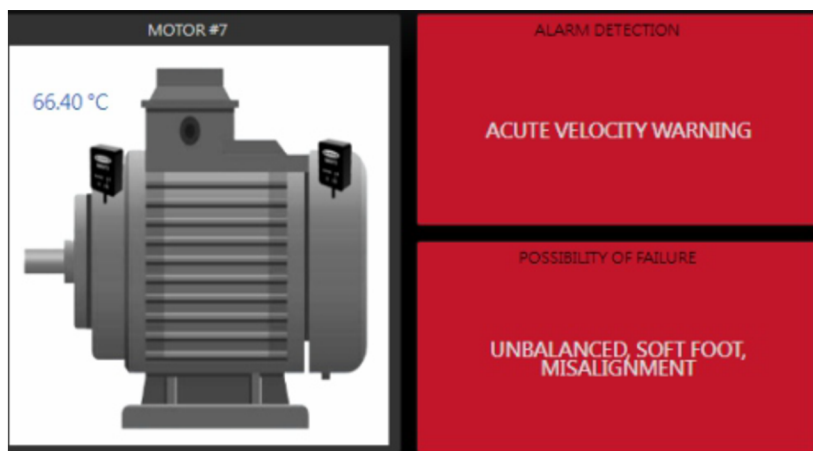
Able to learn : -

- Explain Internet of Things in Industrial Revolution 4.0
- Configure the device for IoT project
- Develop IoT Project at cloud platform
- Develop variety panel in dashboard
- Configure alarm and notification at the IoT system
- Explain the benefits of operation efficiency, data analytic and cloud computing



Required Item : -

- I-Factory training structure
- PLC Control Module
- Motor training structure
- Display monitor
- Power supply module
- WebAccess SCADA
- Embedded Computer
- ECU IoT Gateway
- Network Switch
- Vibration/Temperature sensor



SCADA / INDUSTRIAL IOT TRAINING SET 1000

Technical Specification : -

No	Component	Qty
1	3 Phase 220V Induction Motor	1
2	Digital & Analog Control Module	1
3	Inverter Motor Driver	1
4	Brake module	1
5	ECU IoT Gateway	1
6	Vibration Sensor	1
7	DXM controller	1
8	DXM interface cable	3
9	Siemens DC Power supply	1

No	Component	Qty
10	Siemens PLC Controller	1
11	Industrial PC	1
12	Webaccess SCADA software	1
13	Operation Button	3
14	Dashboard Monitor	1
15	Network Switch	1
16	RJ45 interface cable	1
17	IIoT Workstation	1
18	AC Power supply panel	1